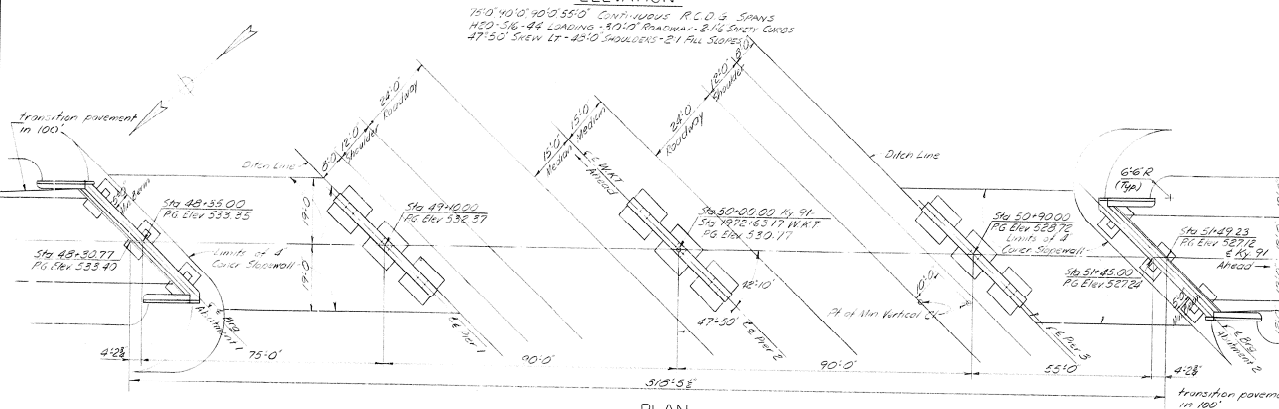


GENERAL NOTES

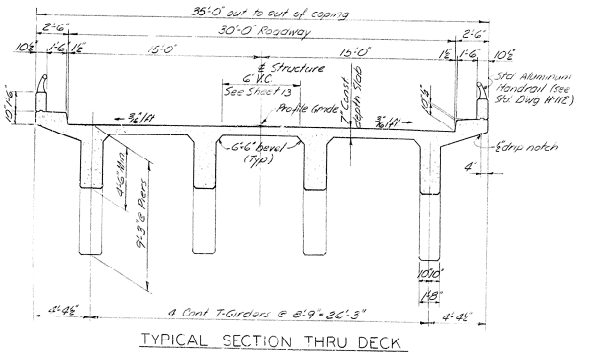
Specifications: Kentucky Department of Highways, 1926 Standards with Amendments.
 Design Load: Bridge designed for H20-S16-44 loading as specified in 927 AASHTO specifications. Spalls are designed for 1200 wheel load.
 Design Strength: For reinforced concrete, $f'_c = 2000$ psi, $f_y = 4000$ psi. For structural steel, $F_y = 50$ ksi.
 Foundation: Foundations designed for a maximum pressure of 6,000 pcf for Group I loading.
 Concrete: Class "A" concrete to be used throughout.
 Reinforcement: Intermediate and top chord reinforcement shall be used in accordance with ASTM A15-52T for cold steel or A16-59T for hot steel. Dimensions shown from face of concrete to bars are clear distances. Spacing of bars is from center to center of bars.
 Beveled Edges: All exposed edges shall be beveled $\frac{1}{2}$ " unless otherwise shown.
 Expansion Joint Material: The cost of this item is to be included in the unit price bid for Class "A" concrete.
 Structural Steel: "Living Sun Bid" for structural steel shall be full support for all structural steel, rivets, bolts, washers, steel pins, and plates in their best condition and welding materials, paint and all labor and materials necessary to erect the steel in accordance with plans and specifications.



Placing Reinforcement shall be placed simultaneously in front back of abutments in completed layers and the 2 ft minimum beam provided as shown on the plans before placing choring and form for the slab spans.

Shore Protection: Shore protection shall be 4 concrete legs with in accordance with SH 010-2-1.
 Paint: All structural steel except pins and pin coating surfaces shall be given one top coat of Type 1 red lead paint and two coats each of aluminum paint. Exposed surfaces of expansion joints not accessible after erection shall be given two coats each of aluminum paint before erection. Pins and pin coating surfaces shall be coated in the shop with a hot mixture of white lead and tallow in accordance with specifications.

Construction Joints: All construction joints shall be carefully formed. The contractor shall furnish sufficient mixer capacity to place the concrete between construction joints as indicated on the plans in a period not exceeding ten hours continuous run. After one section of the concrete has been placed the construction joint shall be thoroughly cleaned of all laitance, loose and foreign material just before the concrete takes its final set, which is about 4 hours. The joints shall then be covered with burlap and left completely saturated with water. Flush the joints with 1:2 Portland cement mortar just before placing the remaining section.
 Scaffolding: The scaffolding supporting the girders and slab in any span of a continuous reinforced concrete unit shall not be removed until all spalls and slabs in all spans of the continuous unit have been spaced for at least twenty-five days.
 Wind Load: This structure was designed using a wind load based on wind velocity of 64 mph.



REFERENCE AND ESTIMATE OF QUANTITIES

LOCATION	SHEET NO.	CLASS OF CONCRETE	VEINF. STEEL LL	STRUCTURAL STEEL Lb	STRUCTURE EXCAVATION Cu Yd	ALUMINUM HANDING LIN FT	PAINT REFIN. CONC. SUPERFICIAL Sq. Yd.
GENERAL PLAN	1						
FOUNDATIONS	2						
ABUTMENT NO. 1	3-517	75.4	375.3		80	10	300
ABUTMENT NO. 2	3-517	75.3	357.1		50	0	240
PIER NO. 1	6-17	23.6	986.0		24	0	
PIER NO. 2	6-17	20.5	1023.3		120	0	
PIER NO. 3	6-17	37.6	37.6		25	0	
SUPERSTRUCTURE ELEVATIONS	13	76.1	2042.8	1			6267
TOTALS		1021.1	5330.33	1	410	20	6267

Approximate weight of structural steel is 22,230 lbs.

BILL OF INCIDENTAL MATERIAL

ITEM	NO.	DESCRIPTION
FORM EXP. UT. MAT.	2	3 1/2" x 10" x 10' of form abutments (1.5)

NOTE: Quantities shown in Bill of Incident Material are approximate only and the contractor is responsible for procuring enough material to complete the work according to the plans and specifications.

STANDARD DRAWINGS

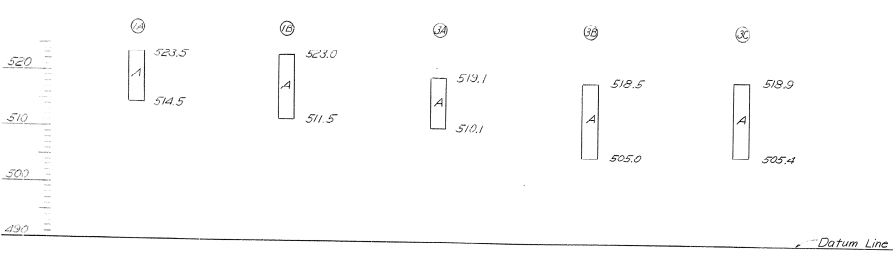
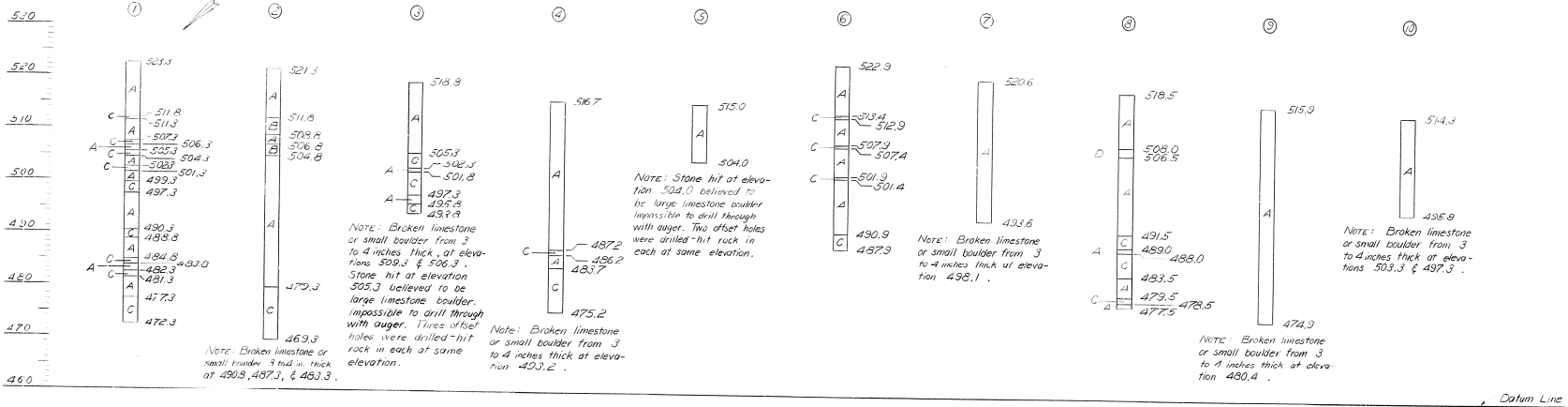
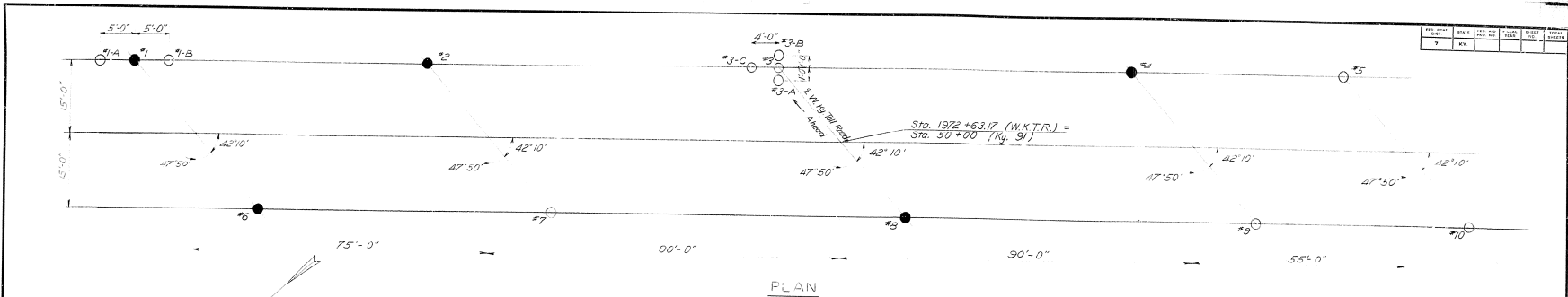
SPI
 H12
 551
 601
 6351

KY 91 SHEET 1 OF 13

COMMONWEALTH OF KENTUCKY
 DEPARTMENT OF HIGHWAYS
 FRANKFORT
 COUNTY OF
CALDWELL
 WESTERN KENTUCKY TURNPIKE
 PRINCETON-ELIZABETHTOWN

ROAD PROJECT NO.
 STATION 1972+6.317
 BRIDGE NUMBER WKT. 1-1-3 CONTROL NO. 14865

PREPARED BY: [Signature]
 CHECKED BY: [Signature]
 DATE: [Date]
 HURST-ROSCHÉ & ASSOCIATES
 PLANS BY: O'NEILL, WRIGHT, MCGRAN & BROWN



○ indicates sounding to sand rock
● indicates cored into sand rock

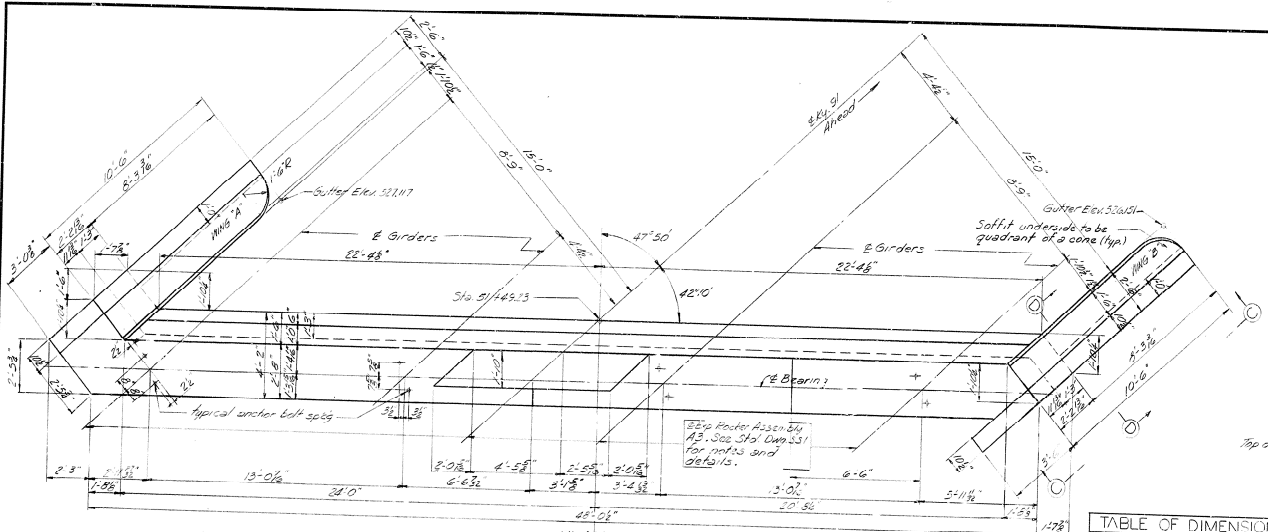
LEGEND
 A Brown Clay Firm & Moist
 B Sandstone Very Soft
 C Limestone Hard Cored
 D Sandstone Medium Hard Cored

CHECKED BY: JRM DATE: 7-61
 DRAWN BY: JRM DATE: 7-61
 PROJECT NO. 14085
 SHEET NO. 2 OF 13

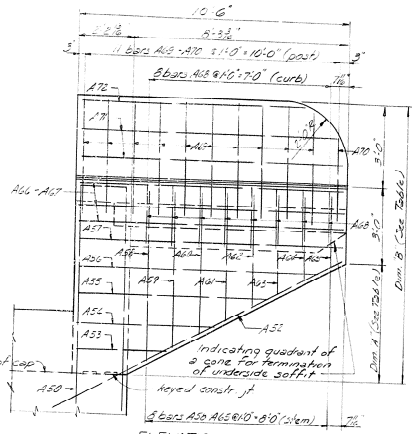
COMMONWEALTH OF KENTUCKY
 DEPARTMENT OF HIGHWAYS
 FRANKFORT
 COUNTY OF
CALDWELL
 WEST KENTUCKY TOLL ROAD
 PRINCETON-ELIZABETHTOWN
 ROAD

STATION 1972 + 63.17
 BRIDGE NUMBER WKT 1-1-3
 CONTRACT NO. 14085
 SHEET NO. 2 OF 13

NO.	DATE	BY	CHKD.	APP'D.
1	5-10-54	LEB		
2				

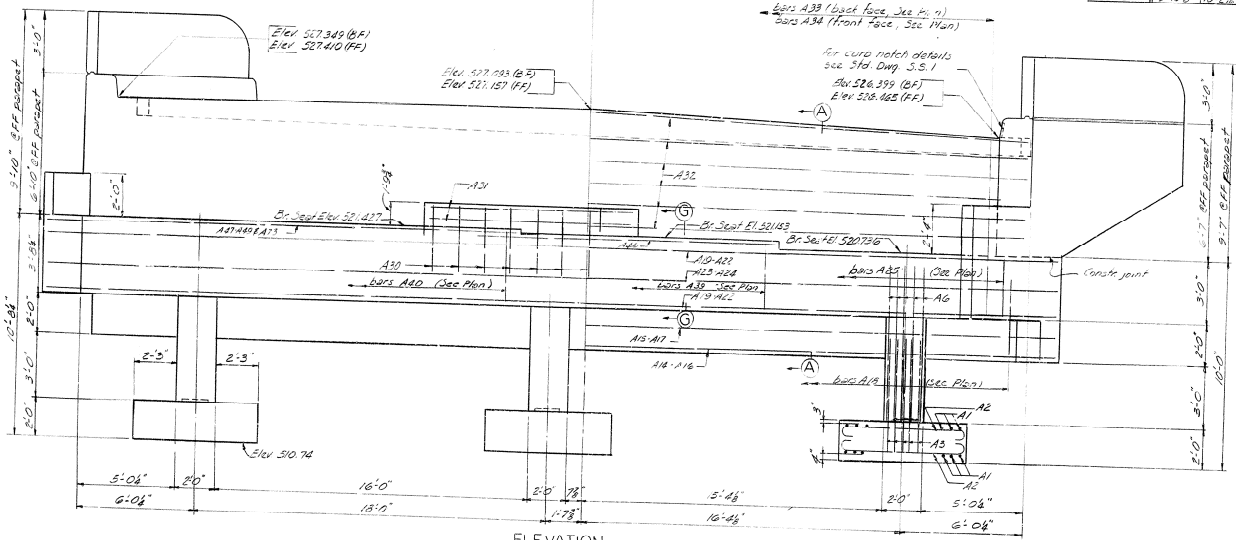


PLAN
ABUTMENT NO 2



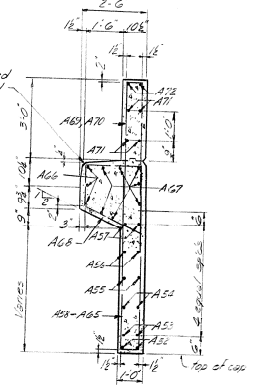
ELEVATION C-C

	ABUT. NO. 1	ABUT. NO. 2
DIM. A	1'-0 1/2"	1'-0 1/2"
DIM. B	3'-0 3/8"	10'-2 1/2"



ELEVATION
(ABUTMENT NO. 2)

To be neatly rounded with an edging tool



SECTION D-D

DESIGNED BY: LEB
 CHECKED BY: [blank]
 DATE: 5-10-54
 SCALE: 1/4" = 1'-0"
 DRAWING NO.: [blank]

ABUTMENTS

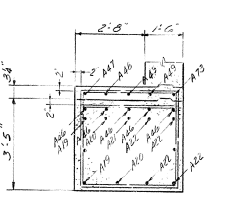
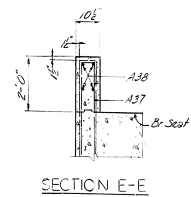
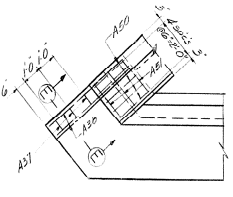
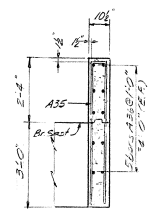
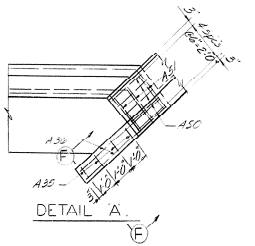
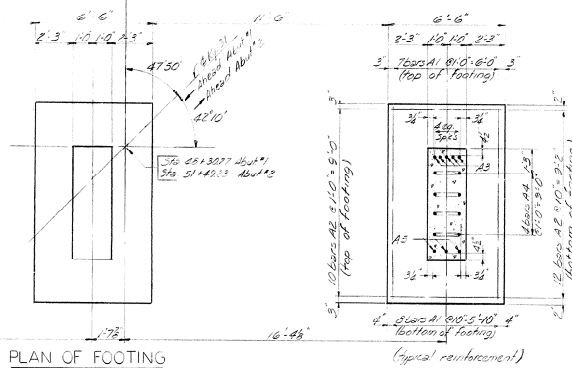
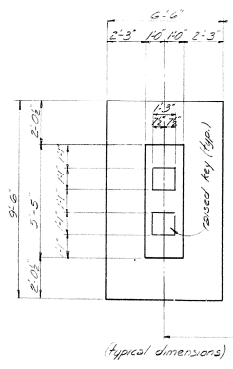
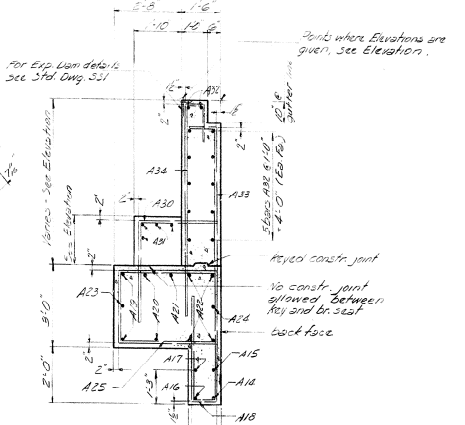
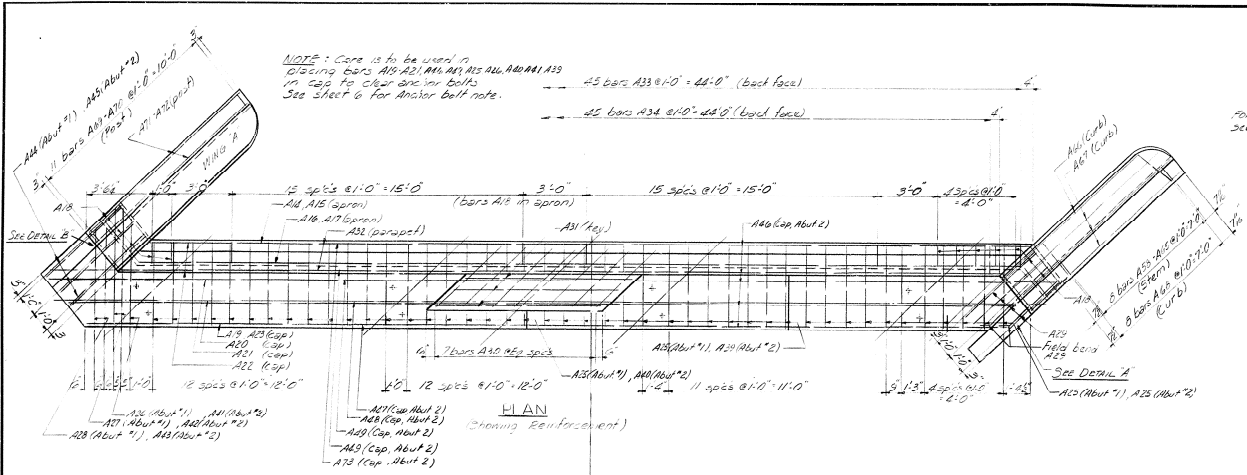
SHEET 4 OF 13

COMMONWEALTH OF KENTUCKY
 DEPARTMENT OF HIGHWAYS
 FRANKFORT
 COUNTY OF
CALDWELL
 WEST KENTUCKY TOLL ROAD
 PRINCETON - ELIZABETHTOWN
 ROAD

STATION 1972+63.17	PROJECT NO.
BRIDGE NUMBER WKT 1-1-3	CONTROL NO. 1A285
	REVISION NO. (1-1)

DIST.	ROUTE	FILE NO.	PROJECT NO.	SHEET NO.	TOTAL SHEETS
7	KY				

NOTE: Core is to be used in placing bars A10-A21, A23-A25, A27-A29, A30-A32, A34, A35, A37, A38, A39, A40, A41, A42, A43, A44, A45, A46, A47, A48, A49, A50, A51, A52, A53, A54, A55, A56, A57, A58, A59, A60, A61, A62, A63, A64, A65, A66, A67, A68, A69, A70, A71, A72, A73, A74, A75, A76, A77, A78, A79, A80, A81, A82, A83, A84, A85, A86, A87, A88, A89, A90, A91, A92, A93, A94, A95, A96, A97, A98, A99, A100, A101, A102, A103, A104, A105, A106, A107, A108, A109, A110, A111, A112, A113, A114, A115, A116, A117, A118, A119, A120, A121, A122, A123, A124, A125, A126, A127, A128, A129, A130, A131, A132, A133, A134, A135, A136, A137, A138, A139, A140, A141, A142, A143, A144, A145, A146, A147, A148, A149, A150, A151, A152, A153, A154, A155, A156, A157, A158, A159, A160, A161, A162, A163, A164, A165, A166, A167, A168, A169, A170, A171, A172, A173, A174, A175, A176, A177, A178, A179, A180, A181, A182, A183, A184, A185, A186, A187, A188, A189, A190, A191, A192, A193, A194, A195, A196, A197, A198, A199, A200, A201, A202, A203, A204, A205, A206, A207, A208, A209, A210, A211, A212, A213, A214, A215, A216, A217, A218, A219, A220, A221, A222, A223, A224, A225, A226, A227, A228, A229, A230, A231, A232, A233, A234, A235, A236, A237, A238, A239, A240, A241, A242, A243, A244, A245, A246, A247, A248, A249, A250, A251, A252, A253, A254, A255, A256, A257, A258, A259, A260, A261, A262, A263, A264, A265, A266, A267, A268, A269, A270, A271, A272, A273, A274, A275, A276, A277, A278, A279, A280, A281, A282, A283, A284, A285, A286, A287, A288, A289, A290, A291, A292, A293, A294, A295, A296, A297, A298, A299, A300, A301, A302, A303, A304, A305, A306, A307, A308, A309, A310, A311, A312, A313, A314, A315, A316, A317, A318, A319, A320, A321, A322, A323, A324, A325, A326, A327, A328, A329, A330, A331, A332, A333, A334, A335, A336, A337, A338, A339, A340, A341, A342, A343, A344, A345, A346, A347, A348, A349, A350, A351, A352, A353, A354, A355, A356, A357, A358, A359, A360, A361, A362, A363, A364, A365, A366, A367, A368, A369, A370, A371, A372, A373, A374, A375, A376, A377, A378, A379, A380, A381, A382, A383, A384, A385, A386, A387, A388, A389, A390, A391, A392, A393, A394, A395, A396, A397, A398, A399, A400, A401, A402, A403, A404, A405, A406, A407, A408, A409, A410, A411, A412, A413, A414, A415, A416, A417, A418, A419, A420, A421, A422, A423, A424, A425, A426, A427, A428, A429, A430, A431, A432, A433, A434, A435, A436, A437, A438, A439, A440, A441, A442, A443, A444, A445, A446, A447, A448, A449, A450, A451, A452, A453, A454, A455, A456, A457, A458, A459, A460, A461, A462, A463, A464, A465, A466, A467, A468, A469, A470, A471, A472, A473, A474, A475, A476, A477, A478, A479, A480, A481, A482, A483, A484, A485, A486, A487, A488, A489, A490, A491, A492, A493, A494, A495, A496, A497, A498, A499, A500, A501, A502, A503, A504, A505, A506, A507, A508, A509, A510, A511, A512, A513, A514, A515, A516, A517, A518, A519, A520, A521, A522, A523, A524, A525, A526, A527, A528, A529, A530, A531, A532, A533, A534, A535, A536, A537, A538, A539, A540, A541, A542, A543, A544, A545, A546, A547, A548, A549, A550, A551, A552, A553, A554, A555, A556, A557, A558, A559, A560, A561, A562, A563, A564, A565, A566, A567, A568, A569, A570, A571, A572, A573, A574, A575, A576, A577, A578, A579, A580, A581, A582, A583, A584, A585, A586, A587, A588, A589, A590, A591, A592, A593, A594, A595, A596, A597, A598, A599, A600, A601, A602, A603, A604, A605, A606, A607, A608, A609, A610, A611, A612, A613, A614, A615, A616, A617, A618, A619, A620, A621, A622, A623, A624, A625, A626, A627, A628, A629, A630, A631, A632, A633, A634, A635, A636, A637, A638, A639, A640, A641, A642, A643, A644, A645, A646, A647, A648, A649, A650, A651, A652, A653, A654, A655, A656, A657, A658, A659, A660, A661, A662, A663, A664, A665, A666, A667, A668, A669, A670, A671, A672, A673, A674, A675, A676, A677, A678, A679, A680, A681, A682, A683, A684, A685, A686, A687, A688, A689, A690, A691, A692, A693, A694, A695, A696, A697, A698, A699, A700, A701, A702, A703, A704, A705, A706, A707, A708, A709, A710, A711, A712, A713, A714, A715, A716, A717, A718, A719, A720, A721, A722, A723, A724, A725, A726, A727, A728, A729, A730, A731, A732, A733, A734, A735, A736, A737, A738, A739, A740, A741, A742, A743, A744, A745, A746, A747, A748, A749, A750, A751, A752, A753, A754, A755, A756, A757, A758, A759, A760, A761, A762, A763, A764, A765, A766, A767, A768, A769, A770, A771, A772, A773, A774, A775, A776, A777, A778, A779, A780, A781, A782, A783, A784, A785, A786, A787, A788, A789, A790, A791, A792, A793, A794, A795, A796, A797, A798, A799, A800, A801, A802, A803, A804, A805, A806, A807, A808, A809, A810, A811, A812, A813, A814, A815, A816, A817, A818, A819, A820, A821, A822, A823, A824, A825, A826, A827, A828, A829, A830, A831, A832, A833, A834, A835, A836, A837, A838, A839, A840, A841, A842, A843, A844, A845, A846, A847, A848, A849, A850, A851, A852, A853, A854, A855, A856, A857, A858, A859, A860, A861, A862, A863, A864, A865, A866, A867, A868, A869, A870, A871, A872, A873, A874, A875, A876, A877, A878, A879, A880, A881, A882, A883, A884, A885, A886, A887, A888, A889, A890, A891, A892, A893, A894, A895, A896, A897, A898, A899, A900, A901, A902, A903, A904, A905, A906, A907, A908, A909, A910, A911, A912, A913, A914, A915, A916, A917, A918, A919, A920, A921, A922, A923, A924, A925, A926, A927, A928, A929, A930, A931, A932, A933, A934, A935, A936, A937, A938, A939, A940, A941, A942, A943, A944, A945, A946, A947, A948, A949, A950, A951, A952, A953, A954, A955, A956, A957, A958, A959, A960, A961, A962, A963, A964, A965, A966, A967, A968, A969, A970, A971, A972, A973, A974, A975, A976, A977, A978, A979, A980, A981, A982, A983, A984, A985, A986, A987, A988, A989, A990, A991, A992, A993, A994, A995, A996, A997, A998, A999, A1000.



ESTIMATE OF QUANTITIES

Concrete Class A	Abut #1	Abut #2
Reinforcement	75.2	75.9
	9253	9771
		Lbs

STATION 1972+63.17 PROJECT NO. 14885

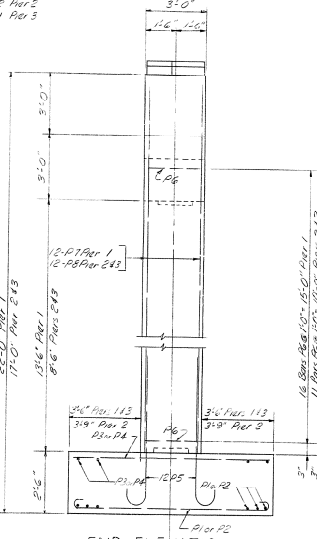
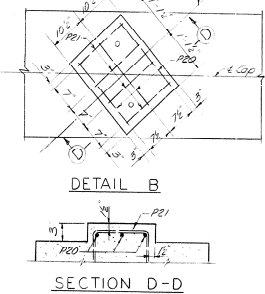
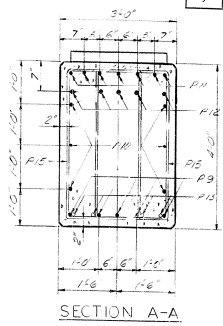
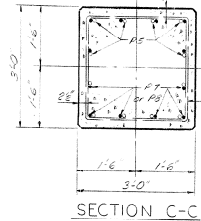
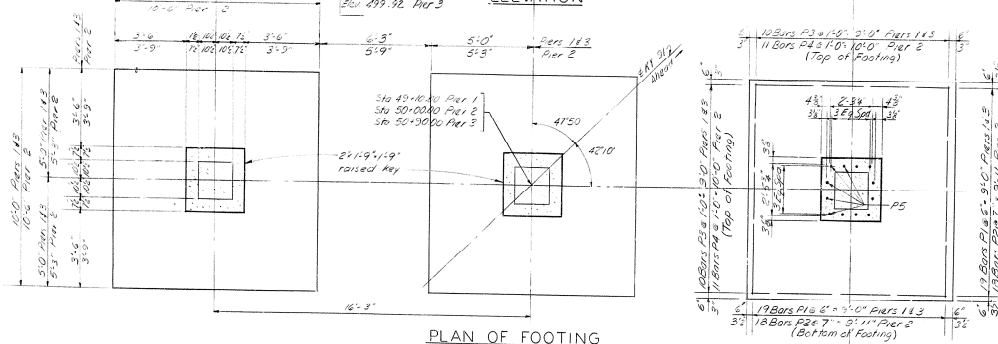
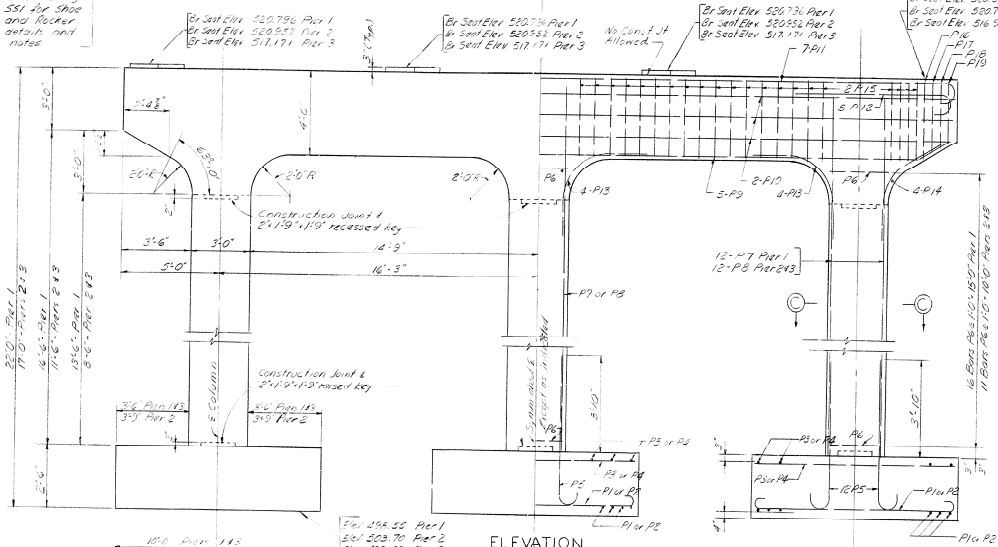
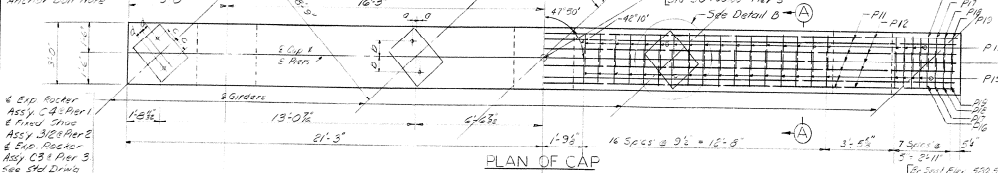
COMMONWEALTH OF KENTUCKY
 DEPARTMENT OF HIGHWAYS
 FRANKFORT
 COUNTY OF
CALDWELL
 WEST KENTUCKY TOLL ROAD
 PRINCETON - ELIZABETHTOWN
 ROAD

BRIDGE NUMBER WKT. 11-3 CONTROL NO. (V-1) DRAWING NO. 14885 INDEX

ABUTMENTS

NOTE:
CORE TO BE USED IN
PIPING BARS P11, P12,
P13, P14, P15, P16 TO
MAINTAIN CLEARANCE FOR
ANCHOR BOLTS. SEE
ANCHOR BOLT NOTE.

DIMENSIONS			
Pier	B	E	d
Pier 1	28'	9'	4'
Pier 2	28'	9'	4'
Pier 3	28'	9'	4'



ESTIMATE OF QUANTITIES

ITEM	PIER 1	PIER 2	PIER 3
Concrete, Class 'A'	62.6 CU YD	60.5 CU YD	57.6 CU YD
Reinforcement	9260 LBS	10232 LBS	9492 LBS

ANCHOR BOLT NOTE-
Note: If elevations and dimensions shown (See Std. Drawing SS1) shall be verified for anchor bolts or dowels by the Superstructure Contractor who shall be responsible for keeping the holes dry in freezing weather after date plates are properly set and anchor bolts are placed in drilled holes, written lead shall be poured in holes and packed until holes are completely filled flush to top of base plates. The cast of packing anchor base holes, furnishing lead, and filling holes with mortar lead shall be incidental to and included in the lump sum bid for structural steel.

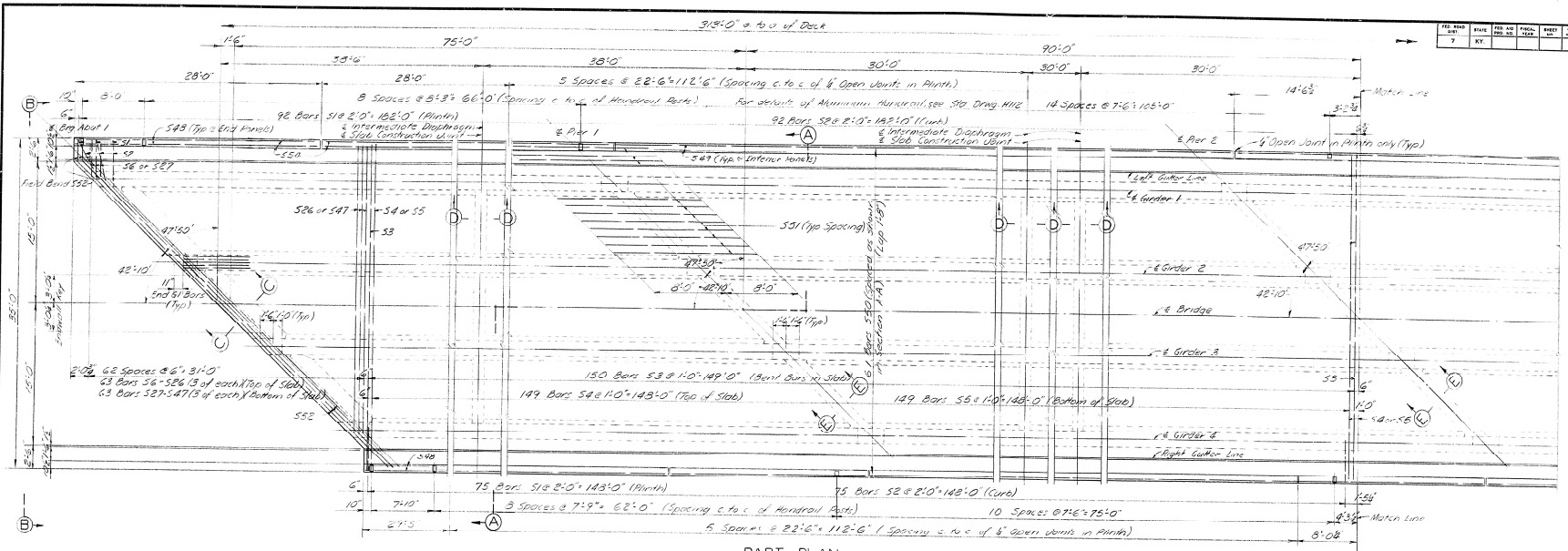
DESIGNED BY: J.W.C. DATE: 5.1.61
CHECKED BY: S.H.D. DATE: 5.1.61
APPROVED BY: S.H.D. DATE: 5.1.61

STATION 1972+63.17 ROAD PROJECT NO. 14885
BRIDGE NUMBER WKT 1-1-3 CONTROL NO. 14885
NO. 14885

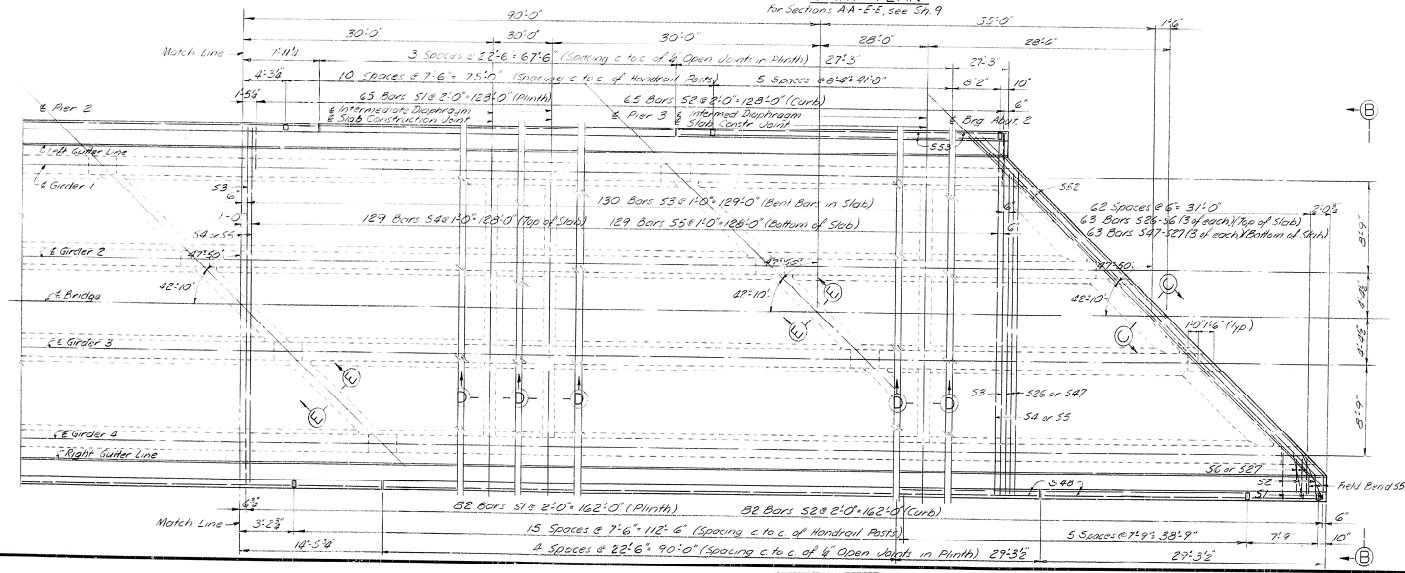
COMMONWEALTH OF KENTUCKY
DEPARTMENT OF HIGHWAYS
FRANKFORT
COUNTY OF
CALDWELL
WEST KENTUCKY TOLL ROAD
PRINCETON-ELIZABETHTOWN

PIERS

REV.	NO.	DATE	BY	CHK.	TOTAL
7	1	11/11/11	AMM	SKM	1



PART PLAN
for Sections AA-E-E, see S6, 9



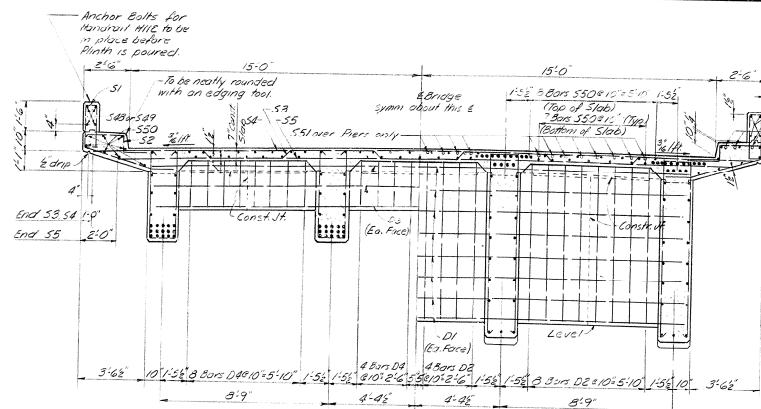
SUPERSTRUCTURE

KY 91 SHEET 8 OF 13
COMMONWEALTH OF KENTUCKY
 DEPARTMENT OF HIGHWAYS
 FRANKFORT
 COUNTY OF
CALDWELL
 WEST KENTUCKY TOLL ROAD
 PRINCETON - ELIZABETHTOWN
 ROAD
 STATION 19+216.317 PROJECT NO.
 DIVISION NUMBER WKT. 1-1-3 CONTROL NO. 14885
 (1)

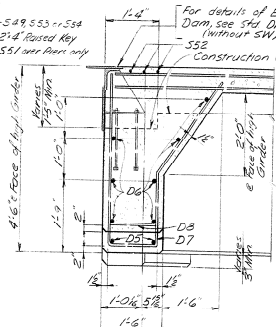
DRAWN BY: SKM
 CHECKED BY: AMM
 DATE: 11/11/11
 PROJECT: WEST KENTUCKY TOLL ROAD
 SHEET: 8 OF 13



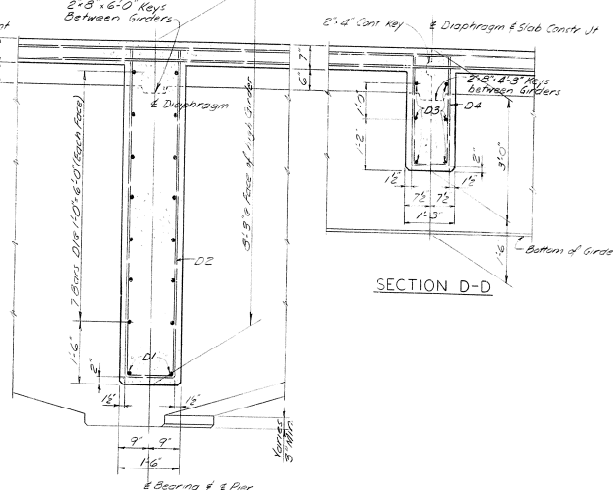
REV.	DATE	BY	CHK	APP
7				



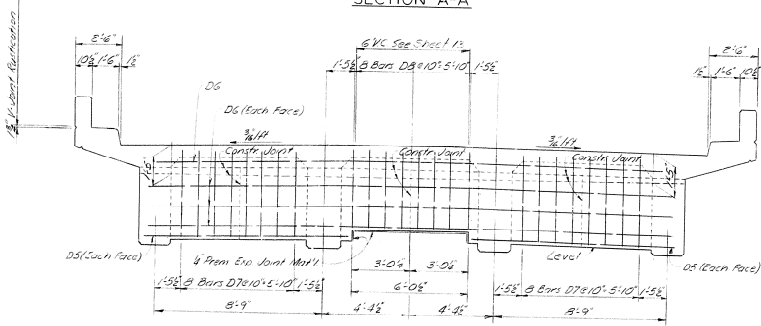
SECTION A-A



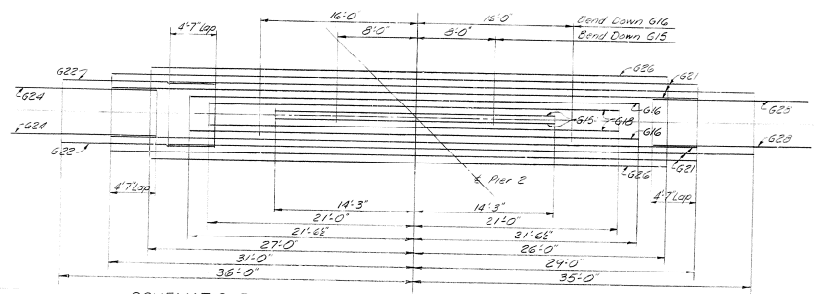
SECTION C-C



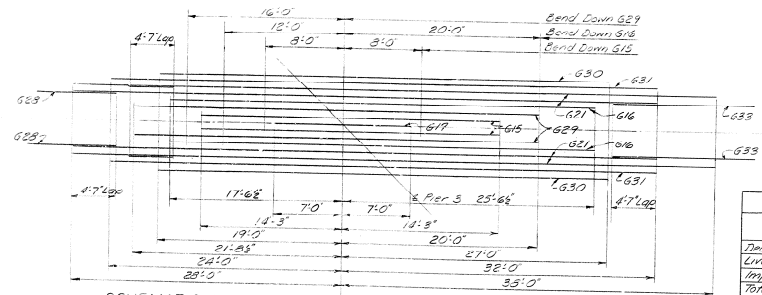
SECTION D-D



ELEVATION B-B



SCHEMATIC PLAN OF NEGATIVE REINFORCEMENT AT PIER 2
(Showing bend down points and ends of Bars)
(For Pier 1 see Sheet 11)



SCHEMATIC PLAN OF NEGATIVE REINFORCEMENT AT PIER 3
(Showing bend down points and ends of Bars)

SCHEDULE OF REACTIONS - KIPS

	Girders 1 or 4					Girders 2 or 3				
	A	B	C	D	E	A	B	C	D	E
Dead Load	60.3	346.8	232.2	201.6	25.9	47.3	205.4	176.9	125.7	21.3
Live Load	38.5	60.0	60.1	57.1	36.4	52.4	91.7	81.9	77.7	49.5
Impact	9.6	14.5	14.0	14.5	10.1	13.1	19.7	19.0	19.7	13.8
Total	108.4	421.3	306.3	273.2	72.4	112.8	307.1	265.6	215.1	84.6

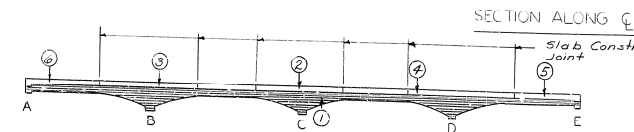
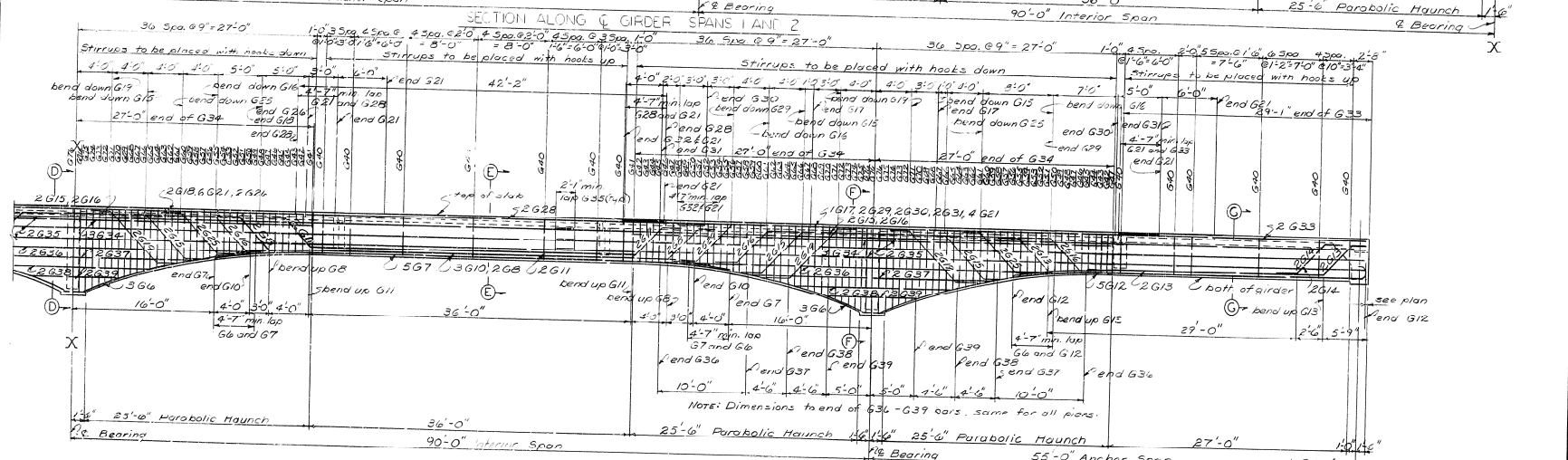
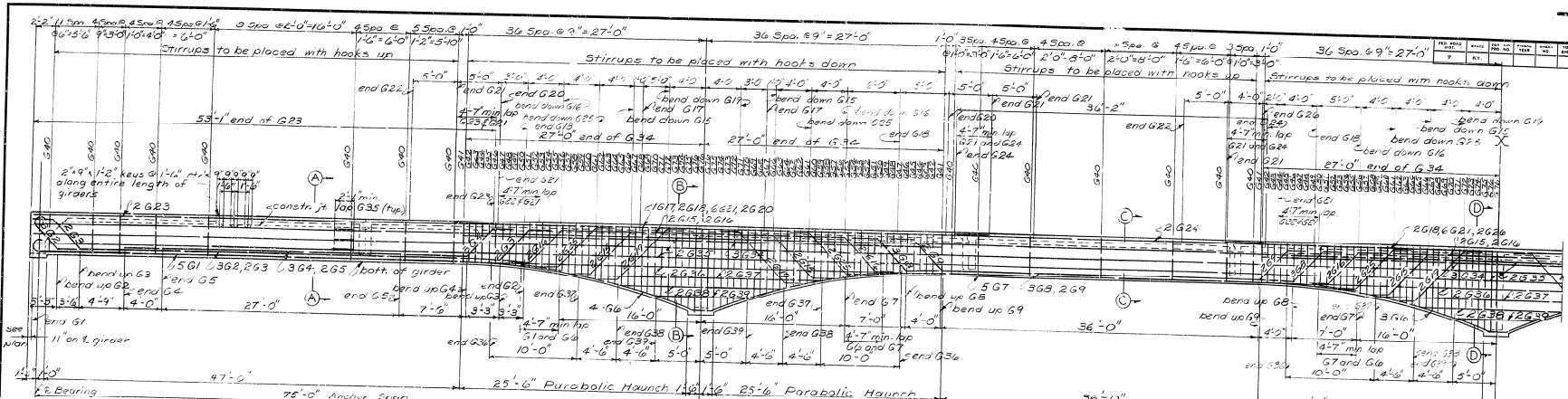
NOTE: For location of points A, B, C, D, E see Paving Order, Sheet 10

DESIGNED BY: [Name] CHECKED BY: [Name] DATE: [Date]
 DRAWN BY: [Name] REVISION: [Number] DATE: [Date]
 APPROVED BY: [Name]

COMMONWEALTH OF KENTUCKY
 DEPARTMENT OF HIGHWAYS
 FRANKFORT
 COUNTY OF
CALDWELL
 WEST KENTUCKY TOLL ROAD
 PRINCETON-ELIZABETHTOWN
 ROAD

BRIDGE NUMBER WK.1 1-1-3
 CONTROL NO. 14635
 SHEET 9 OF 13
 PROJECT NO.
 DRAWING NO. 14635
 INDEX

SUPERSTRUCTURE



PAIR SECTION 1 IN ONE CONTINUOUS OPERATION IN HORIZONTAL LAYERS FOR EACH GIRDER. SEE PLAN, SHEET 5, FOR CONSTRUCTION JOINTS.

ORDINATES FOR PARABOLIC HAUNCH

STATION	ORDINATE
0+00	0.00
0+05	0.01
0+10	0.04
0+15	0.09
0+20	0.16
0+25	0.25
0+30	0.36
0+35	0.49
0+40	0.64
0+45	0.81
0+50	1.00
0+55	1.21
0+60	1.44
0+65	1.69
0+70	1.96
0+75	2.25
0+80	2.56
0+85	2.89
0+90	3.24
0+95	3.61
1+00	4.00

NOTE: For sections A-A thru G-G see Sheet 11 for Schematic Plan of Negative Reinforcement or Part 308 Sheet 11, of Part 242 see Sheet 9 for Schedule of Reactions, see Sheet 9

SUPERSTRUCTURE

KY 31 SHEET 10 OF 13

COMMONWEALTH OF KENTUCKY
 DEPARTMENT OF HIGHWAYS
 FRANKFORT
 COUNTY OF

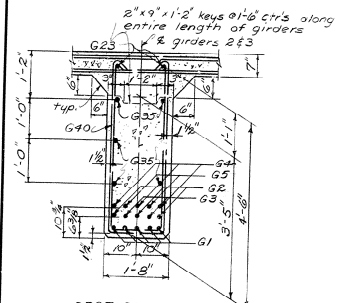
CALDWELL
 WEST KENTUCKY TOLL ROAD
 PRINCETON-ELIZABETHTOWN

ROAD

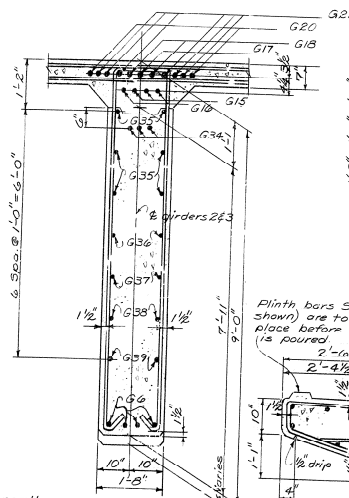
STATION 1072+63.17 PROJECT NO.

BRIDGE NUMBER W.K.T. I-1-3 CONTROL NO. 14285

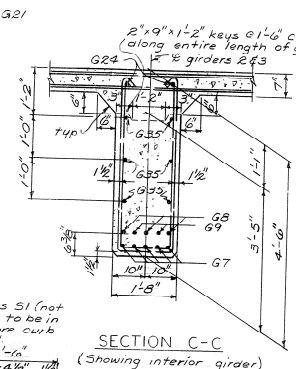
NO. 200	DATE	REV. NO.	BY	CHKD.	DATE
7	KY				



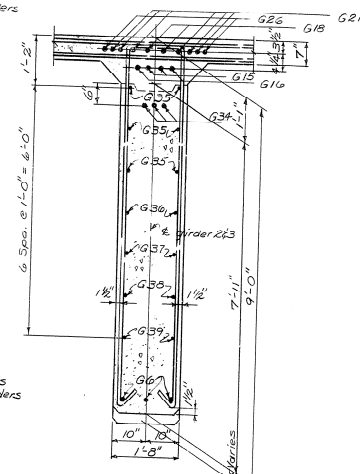
SECTION A-A
(Showing interior girder. Reinforcement same for fascia girder, except for curb)



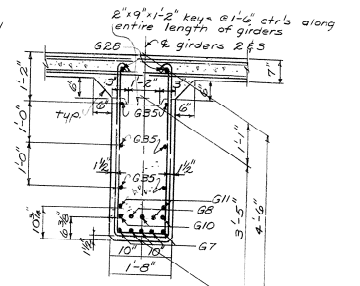
SECTION B-B
(Showing interior girder)



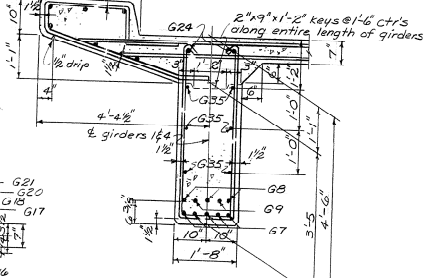
SECTION C-C
(Showing interior girder)



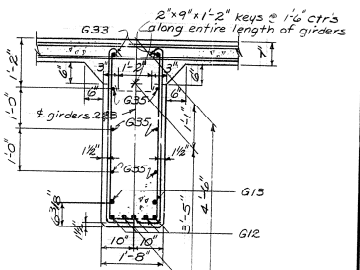
SECTION D-D
(Showing interior girder. Reinforcement same for fascia girder, except for curb)



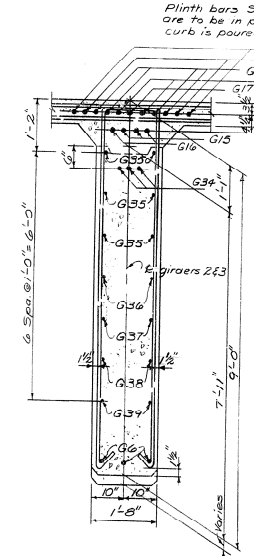
SECTION E-E
(Showing interior girders. Reinforcement same for fascia girder, except for curb)



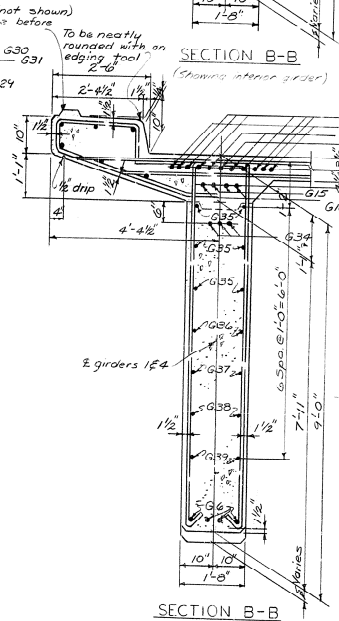
SECTION C-C
(Showing fascia girder)



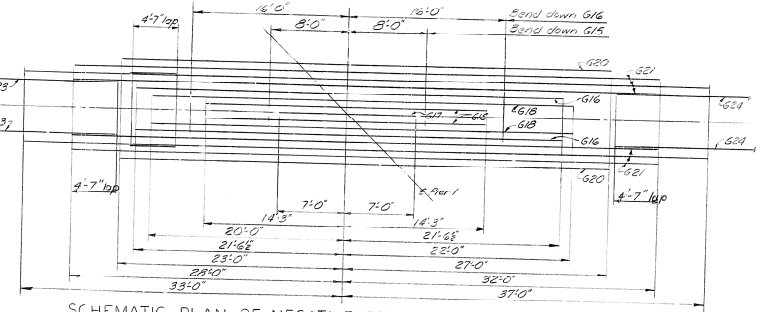
SECTION G-G
(Showing interior girder. Reinforcement same for fascia girder, except for curb)



SECTION F-F
(Showing interior girder. Reinforcement same for fascia girder, except for curb)



SECTION B-B
(Showing fascia girder)



SCHEMATIC PLAN OF NEGATIVE REINFORCEMENT AT PIER 1
(Showing bend down points and ends of bars) (For Piers 2 & 3 see Sheet 9)

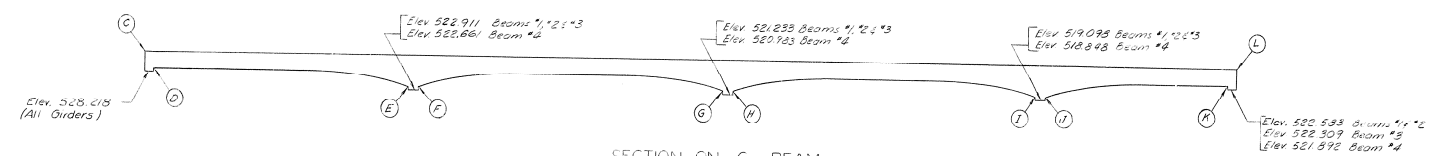
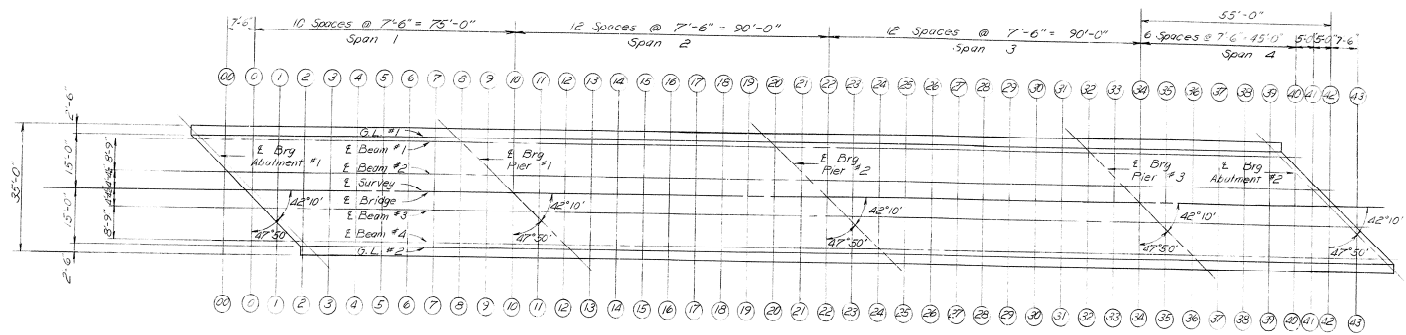
DESIGNED BY: [Signature]
 CHECKED BY: [Signature]
 DATE: [Date]
 REVISIONS:
 NO. 1 BY: [Signature] DATE: [Date]
 NO. 2 BY: [Signature] DATE: [Date]
 NO. 3 BY: [Signature] DATE: [Date]

KY 91 SHEET 11 OF 13

COMMONWEALTH OF KENTUCKY
 DEPARTMENT OF HIGHWAYS
 FRANKFORT
 COUNTY OF
 CALDWELL
 WEST KENTUCKY TOLL ROAD
 PRINCETON - ELIZABETHTOWN
 ROAD

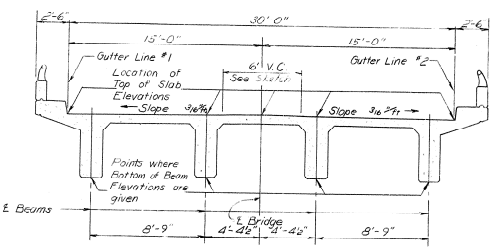
STATION 1972+63.17 PROJECT NO. [Blank]
 BRIDGE NUMBER WKT 1-1-3 CONTROL NO. 14885
 SHEET NO. [Blank]

NO.	DATE	BY	CHKD.	APP'D.	REVISION
1					

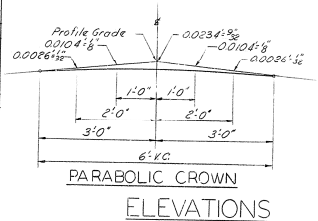


SECTION ON C BEAM
Showing Location of Typical Elevation Points

TABLE OF ELEVATIONS											
Section	Gutter #1 Top of Slab	Beam #1 Bott of Beam	Beam #2 Top of Slab	Beam #2 Bott of Beam	E. Bridge Top of Slab	Beam #3 Top of Slab	Beam #3 Bott of Beam	Beam #4 Top of Slab	Beam #4 Bott of Beam	Gutter #2 Top of Slab	Section
C	528.704				528.714					528.724	20-20
D	528.787		528.823			528.716	528.468				21-21
E	528.398		528.314			528.240	528.960				22-22
F	528.335		528.310			528.207	528.911				23-23
G	521.882		521.829			521.653	521.896				24-24
H	528.828		76.6			528.572	528.233				25-25
I	519.909		519.807			519.563	519.777				26-26
J	530		732			486	528				27-27
K	522.965		522.873			522.539	522.142				28-28
L	527.424				527.171					526.879	29-29
20-20	523.237	520.773								526.879	30-30
0-0	.024	.024	523.237	528.503	533.327						31-31
1-1	.117	.642	250	720	275	528.712	528.712				32-32
2-2	.033	.562	186	686	219	155	655	528.477			33-33
3-3	532.935	.467	.100	.620	148	.091	.591	.422	532.882		34-34
4-4	.824	.360	.004	.514	.061	.031	.513	.356	.419		35-35
5-5	.706	.191	532.906	.406	532.959	532.918	.419	.277	.743		36-36
6-6	.587	527.274	.784	.263	.842	.010	.310	.182	.652		37-37
7-7	.469	525.505	.661	527.339	.718	.681	.187	.072	.446		38-38
8-8	.354		.537	526.077	.591	.560	527.702	527.449	.477		39-39
9-9	.240	524.999	.475	523.878	.466	.431	526.442	.643	.296		40-40
10-10	.130	526.375	.295	524.394	.344	.305	524.404	526.603	.163		41-41
11-11	.023	527.374	.178	526.189	.223	.181	523.584	524.785	.030		42-42
12-12	531.915	.441	.844	527.848	.105	.059	525.599		531.900		43-43
13-13	.802	.529	.952								
14-14	.679	.403	.830	.338	.871	.824	527.307	528.604	.771		
15-15	.548	.279	.716	.216	.728	.708	.208	.947	.523		
16-16	.428	526.340	.585	.085	.630	.535	.138	.937	.404		
17-17	.263	.685	.446	526.346	.425	.452	526.582	.811	.280		
18-18	.148	525.324	.298	.775	.319	.309	.809	.677	.147		
19-19	530.975	524.008	.147	.045	.137	.159	.659	.538	.006		



TYPICAL SECTION
Note: Elevations on this sheet include construction camber and are to be maintained with tubemark in place.



COMMONWEALTH OF KENTUCKY
DEPARTMENT OF HIGHWAYS
FRANKFORT
COUNTY OF
Caldwell
WEST KENTUCKY TOLL ROAD
PRINCETON - ELIZABETHTOWN
ROAD
STATION 1972 + 63.17 PROJECT NO.
BRIDGE W.K.T. 1-1-3 CONTROL DRAWING NO. 14825 INDEX
(1-1) 1/2

DESIGNED BY: J.W. HARRIS
 CHECKED BY: J.W. HARRIS
 DATE: 10/15/54
 DRAWN BY: J.W. HARRIS
 DATE: 10/15/54
 PROJECT NO.: 14825
 SHEET NO.: 13 OF 13